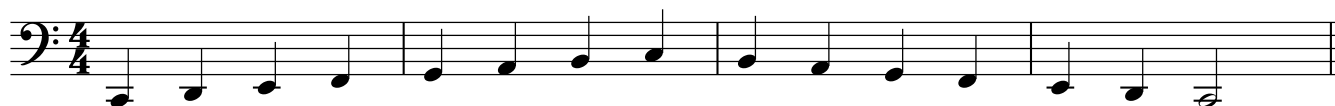


# C MAJOR one octave

## Scale



Play one-bar rhythms in 4/4 to this duet – see suggestions below.

Duet part by  
Kathy and David Blackwell

TEACHER

PUPIL

The first system of the duet. The Teacher part is on a single staff in bass clef, 4/4 time, with a melody of eighth notes: C2, D2, E2, F2, G2, A2, B2, C3, D3, E3, F3, G3, A3, B3, C4. The Pupil part is on a single staff in bass clef, 4/4 time, with a bass line of whole notes: C2, C2, C2, C2.

The second system of the duet. The Teacher part continues with eighth notes: D3, E3, F3, G3, A3, B3, C4, B3, A3, G3, F3, E3, D3, C3, B2, A2. The Pupil part continues with whole notes: C2, C2, C2, C2.

The third system of the duet. The Teacher part continues with eighth notes: G2, F2, E2, D2, C2, B1, A1, G1, F1, E1, D1, C1, B0, A0, G0, F0. The Pupil part continues with whole notes: C2, C2, C2, C2.

The fourth system of the duet. The Teacher part continues with eighth notes: E1, D1, C1, B0, A0, G0, F0, E0, D0, C0, B-1, A-1, G-1, F-1, E-1, D-1. The Pupil part continues with whole notes: C2, C2, C2, C2.

## Suggested one-bar rhythms

