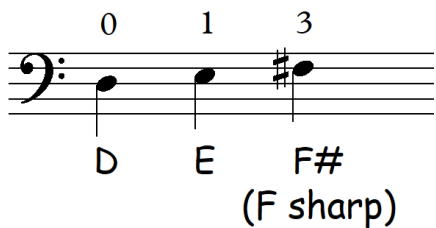
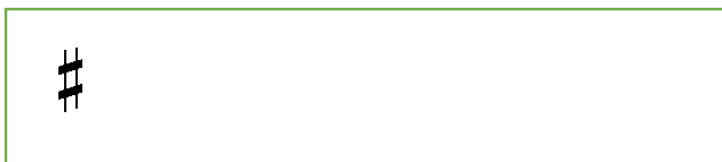


**D string note: F#**

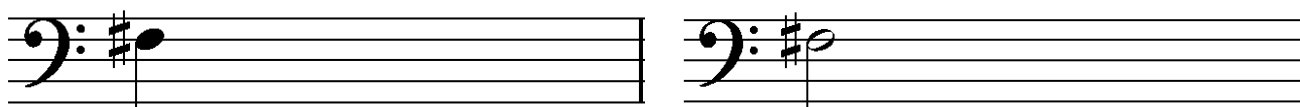


This is a sharp sign **#** It makes a note sound higher.

Draw some sharp signs in this box:



Draw some crotchet and minim F sharps on these staves.



## Au clair de la lune

A minim F# and a crotchet F# are missing in this tune. Draw them at the two \*.



How many Ds are in this tune? \_\_\_\_\_

What does this sign mean  \_\_\_\_\_



Add the correct count-in in the speech bubble and play this tune on your cello, counting in before you start.