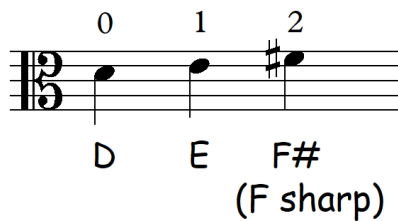
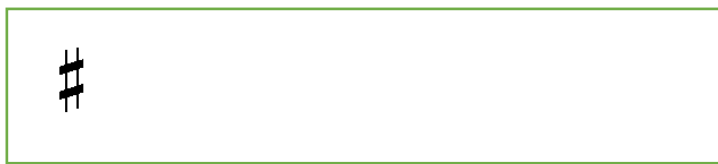


D string note: F#

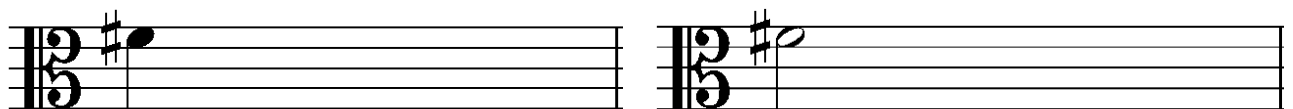


This is a sharp sign **#** It makes a note sound higher.

Draw some sharp signs in this box:



Draw some crotchet and minim F sharps on these staves.



Au clair de la lune

A minim F# and a crotchet F# are missing in this tune. Draw them at the two *.



How many Ds are in this tune? _____

What does this sign mean  _____



Add the correct count-in in the speech bubble and play this tune on your viola, counting in before you start.